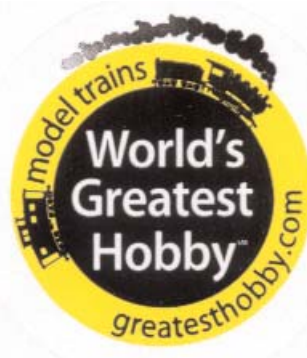


Waybill

Mid West Region NMRA –
Summer 2009



President's Report

By Bill Litkenhous, President, MWR

Yes, that is a new name at the top of this report. By this time you know that I have been elected to succeed our very capable past president, Gary Children. I am looking forward to this new challenge for me.

As I sat down to write this report, I heard the horn of our daily train working its way thru the city of Bedford and I compare it to me starting to work my way thru this presidency. For those of you that don't know, I live in Bedford, IN, a community in southern Indiana and in the most south-eastern part of the Midwest region.

I recently returned from the region's spring convention in Rockford, IN and had a great time at this well run event. Before I even arrived in Rockford, I did some railroading by stopping at Rochelle for about an hour and a half. Several trains passed through while I was there, including a Union Pacific train with engines 2001 and 2002 at the lead. These were the two locomotives that the UP did a special paint on for the Olympic Torch Relay for the 2002 Winter Olympics in Salt Lake City. Both locomotives looked like they had just been painted, they were that clean.

I participated in as many of the activities as I could. After registering Friday night, I operated on Bill Kirchmeyer's outstanding Chicago Champaign & Southern Railroad, having the opportunity to run 4 trains, including the Millvale turn towards the end of the session. I was told that almost no one is able to complete the turn and I was no exception. I didn't even make it to Millvale before the session ended. It was a very enjoyable evening. I attended as many of the excellent clinics that I could get to; there is never enough time to attend all that you would like to see.

In the afternoon Tom Cain, Superintendent of the Central Indiana Division and I visited five layouts. We started at Chas. Wickhorst's and then went to Bob Jarrett's N gauge layout. We were particularly impressed with Bob's signals on this well done layout.

We went to Dennis Blunt's Omaha Road next. This layout was impressive with the many buildings and scenery. While leaving Dennis's house, his wife asked us if we were going to Bill Teeter's house to see his layout. We had mistakenly thought that he was not open on Saturday we had not had this on our list but after finding that we only had to walk through his back yard to get to Bill's we went there. Bill's Pekin & Peoria Union Terminal Railway was again a very impressive layout to view. Also, while Tom and I were talking to Bill, he mentioned that he had lived in this house for ten years before he knew he had a neighbor in model railroading. A small world!

Our last layout visit was Mike Schafer's Illinois & St. Louis Railroad in Lee, IL. Mike's track work was impressive, especially all the diamonds at the State Line Tower. After taking many photographs of Mike's layout, Tom and I made a beeline back to the convention center. I enjoyed a good dinner with good conversation at the table. After dinner we had a very good auction with some spirited bidding. Sunday morning was the board meeting where at the end of the meeting Gary turned the gavel over to me.

It was an excellent convention and if there are any members of the region that have not had the pleasure of attending one of our conventions, I would heartedly recommend that you give it some serious consideration. After the board meeting I wrapped up some items for the region relating to my new office and then took off for Bedford. Since it was over seven hours driving back to southern Indiana, I did not tour any more of the layouts. The following weekend was no easier for me, as I was the chairperson for the joint Annual Bedford Kiwanis Club and Central Indiana Division spring show. The set up went smoothly and the dealers and attendees all seemed to enjoy themselves.

That is enough of the conventions and shows. I am going to try to get in some modeling during the next few months. Remember, model railroading is supposed to be fun.

The WAYBILL

Editor

David J. Leider MMR
601 N. Elmhurst Rd.
Prospect Hts. IL 60070
847-253-7484
sooauthor@netzero.net

The WAYBILL

is published quarterly by the Midwest Region of the National Model Railroad Association Inc. for the benefit of the model railroading community.

SUBSCRIPTIONS

Electronic delivery is free to all members of the Region. Send an email to mwrsecy@mwr-nmra.org with your name, email address, NMRA number and Division. Use "Electronic Delivery Subscription" as the subject of your email. For change of e-mail address, use "E-mail Address Change" as the subject. Regular mail subscriptions are \$6.00 per year; \$12.00 for two years. To subscribe, complete the applicable sections of the NMRA Membership Application at <http://www.nmra.org/>.

CONTRIBUTIONS

Articles, photographs and artwork are encouraged in either hardcopy or electronic form. The editor uses Quark 4.1 as his publishing software on a Mac. Word documents are also acceptable, but please send the photographs as an attachment. Copy is due by the 10th of February, May, August and November and should be sent to the editor at the above address. Submitted material will be returned upon request.

ADVERTISING

Deadlines for camera ready adds are the same as for the copy deadlines. Please submit by email to the editor as a TIF or .jpeg. We accept only railroad related adds. Advertising rates are:

	yearly	or	per issue
Full page	\$100		\$35
Half page	75		25
Quarter page	50		20
Business card	25		15

Please send payment to Bryan Lemonds
6325 Bent Pine Drive
Bloomington, IN 47408
(812) 334-8841

Editor's Column

I want to thank the people who commented about the last waybill, thank you. Comments good or bad, are welcome.

I would like to introduce David Nelson, a new columnist. He is the author of "the Frugal Modeler". We all look for ways to do things inexpensively, and when the results turn out superior, well that's a plus.

NMRA National Contest

There have been several changes to the NMRA contests that you should be aware of. Perhaps you can't make it to New Haven. I know I can't (vacation will be all used up), but with Milwaukee right around the corner, maybe you will be motivated to get something ready. The changes were designed to make the contests more user-friendly and less intimidating. If you have never entered a national contest (which I have not, although I have entered a regional) maybe you will want to try. The following e-mail from Bob Hamm MMR, National Contest Chairman explains the changes:

"I have been the National Contest Chairman for several years now and I and my staff have been working hard to improve that activity and make it more appealing to attendees. In Anaheim we added two events: the People's Choice Awards, a direct entry, minimal paperwork popular vote contest and the Model Showcase, a non-competitive, display-only event (complete or in process models are okay) again with little paperwork. For Hartford we are premiering three new activities: a Kit Built Contest to run in parallel with the regular Scratch Built contest (with a parallel array of place awards); an event we are calling "An Afternoon of Meet the Modeler, Photographer, & Crafter" in which

entrants in the Showcase and all the contests are encouraged to come to the contest room and be with their entries to explain, discuss, and generally showoff their works. Now entrants may stay with their entrees at any time the contest room is open (except for Wednesday when we are judging) but we are trying to focus this on Tuesday to get the most people to attend. The third new event is a Thursday morning score review period for the judged contest (Kit and Scratch) during which contestants may discuss and ask questions of the judges and staff. (The awards will take place on Thursday afternoon.)"

The Model Showcase sounds particularly interesting. Maybe you want to put a model in a contest at the region or national level, but are not sure if it is good enough. Bring it and listen to what others have to say. Or perhaps you are stumped on how to do something, bring it and let the experts have a look at it. Remember, you will not be judged and the model does not have to be completed. The Popular Vote Contest sounds good for entering that special model that you have, but do not want to fill out the paperwork. So get some models ready, if not in New Haven, then certainly in 2010 to show the rest of the regions what the Midwest Region is can do

NO MORE EXCUSES!

The NMRA's National Contest has expanded into a

Celebration of Models, Photos & Crafts.

with a greater choice of events!

- Kit Build Contest
- An afternoon of "Meet the Entrants"
- People's Choice Award (Popular vote)
- Model Showcase - non-judged "show & tell"

Plus, all the normal contest events.

It's fun and a great chance to improve your skills. If not now, when?

Visit the National Model Railroad Assn.'s website/contest page for details!
<http://www.nmra.org>

Region news

A committee has been appointed to look at dividing the Calumet Division, which has folded, into the Dupage and Central Indiana Divisions. More to follow.

2010 Election

Petition Deadline Is July 30, 2009

Although the 2010 election is several months away, it is time to start the election cycle. In 2010 we will elect four (4) Directors-at-Large.

Sean Lamb from the South Central Wisconsin Division, Bob Lehnen from the Central Indiana Division and Dave Poquette from the Wisconsin Southeastern Division, three of the four incumbent DALs, will complete their second two-year terms in 2010 and under the Bylaws will not be eligible to run for another term in 2010. Thanks to Sean, Bob and Dave for their dedicated service. Jim Osborn from the Fox Valley Division will complete his first two-year term and will be eligible to run for another term in 2010.

There are two ways that your name can be placed on the ballot. The first is by recommendation of the Nominating Committee and approval of the Board of Directors. To be considered by the Nominating Committee (Chairman Jim Spice from the North Shore & Western Division and Members Reid Kahrs from the Wisconsin Southeastern Division and Jim Osborn from the Fox Valley Division), you must submit a biography/candidate's statement of 200 words or less and a 2x2, passport-style photo to the Committee with a copy to the Region Secretary (Bert Lattan) as soon as possible, but no later than July 30, 2009.

The preferred method of delivery is electronic mail. (While e-mail is not required to serve on the Board, it is highly desirable since the Board conducts pre and post meeting activity by e-mail.) If you do not have e-mail, you may mail your bio/photo to Bert Lattan, who will convert it to an electronic format and send it to the Committee. Addresses and e-mail addresses for the Committee and the Secretary are on the Region website (www.mwr-nmra.org).

The second method is by petition signed by at least ten (10) current, resident NMRA members. The petition form is available on the Region website or it may be requested from Bert Lattan. Your petition must be accompanied by a biography/candidate's statement of 200 words or less and a 2x2, passport-style photo. It must be received by Bert Lattan no later than July 30, 2009. He will convert it to an electronic format and forward it to the Committee.

The Committee will submit its recommendations and the names of all resident members nominated by petition to the Board of Directors for review and approval during its next meeting, which will be held on Sunday, September 13, 2009 in Fitchburg, Wisconsin.

Each candidate's biography/statement & photo and a ballot will be included in the Winter 2009 issue of the Waybill. The results of the election will be announced during the 2010 Annual Meeting of Members.

If you have any questions about this process, please feel free to contact any member of the Committee or the Secretary. —Jim Spice

Minutes, Annual Meeting of Members, Midwest Region, NMRA, April 18, 2009

President Gary Children called the meeting to order at 8:00 pm at the Clock Tower Resort & Conference Center in Rockford, Illinois. Gary thanked the Rock River Valley Division for hosting the 2009 Spring Convention.

Minutes from the Annual Meeting of Members held on May 10, 2008 were unanimously approved as written and published in the Summer 2008 issue of the Waybill.

Reports

In Bryan Lemonds absence, Bert Lattan reported on Region finances. As of December 31, 2008 the General Fund and the Youth Fund had combined net assets of \$33,569.14. For the year then ended revenues, primarily from Waybill subscriptions and the NMRA dues rebate, were \$9,923.11; expenses, primarily for the Waybill, were \$6,362.65 and net revenue was \$3,560.46.

Gary Children presented several Service Awards.

Old Business:

There was no old business.

New Business:

Gary Children announced the winners of the election:

President	Bill Litkenhous
Vice President	Paul Mangan
Directors-at-Large	Chris Roeben, South Central Wisconsin Division
	Jim Wise, Illinois Valley Division
	Duke Yerman, North Shore & Western Division

Gary Children said that because the 75th Anniversary NMRA National Convention was being held in Milwaukee in 2010, the Midwest Region would not hold a 2010 Spring Convention. The 2010 Annual Meeting of Members and the Spring 2010 Board of Directors meeting will be held on a date and at a place that will be determined at the Fall 2009 Board of Directors meeting.

The meeting was adjourned at 8:08 PM.

Respectfully submitted,

Bert Lattan
Secretary

Midwest Region Achievement Program Report by Marvin Preussler- MWR AP Manager

I am happy to report that there has been a great deal of activity from our members. Everyone seems to have been busy over the long winter months. One thing I would like to point out as just a reminder is to print very clearly when you fill out the forms. Everyone's hand writing is unique, and sometimes it is kind of hard to make out the names and addresses on the forms. So to make sure all the spelling is correct, be sure to print clearly when filling them out. Makes it a little easier for me and it eliminates mistakes.

The following members received the Golden Spike Award:

Michael Wood-	Algonquin, IL
Robert Supinger-	Rockford, IL
Ronald Weyher -	Iron River, MI
Michael Havens-	Greencastle, IN
Dale Burge-	Belvidere, IL
James Bengert-	Evansville, IN
Harold Abramson-	Spring Grove, IL
Emory Luebke-	Greenville, WI

The following members received AP Certificates:

Michael Wood –	Algonquin, IL	Volunteer
Fred Henize-	Channahon, IL	Official
Jack Andrews-	Delavan, IL	Volunteer
Gary Loiselle-	Rockford, IL	Electrical
Michael Havens-	Greencastle, IN	Scenery
John Pancini-	Avon, IN	Scenery
Donald Lewis-	Dixon, IL	Author
Ronald Lane-	Columbus, IN	Scenery & Civil
Roger Kujawa-	Morton, IL	Volunteer
Bob Lehnen-	Indianapolis, IN	Electrical

There have been some questions from our members recently directed to me as to how long the wait will be to receive their certificate. The short answer is usually "I don't know". What I can tell you is that I process the paperwork somewhere between the 20th and the 28th of each month. I then send it to the National Assistant AP Chairman. He then processes it at the end of the month at his end or the very early part of the next month. He sends the paperwork on to the National AP Chairman for approval and makes out the certificate. The certificate is then sent to me, and I then send it right to the member or to the Division AP Chairman for presentation to the member. In general, it has been running around two months wait time to process a certificate and get it to the member. It seems to have slowed down a little on the National level. I can tell you that I do not "sit" on the paperwork for any member. I take my responsibilities seriously and would like to see people enjoy the AP program.

In the same way, members must understand that these are all volunteer positions. I myself work 40-50 hours a week, so that may be the same case of those on the National level too. I can't tell you for sure. If I find out any information about causes for delays, I will pass them on to you, the members. I am sure that with the NMRA, as with most organizations, volunteers are always needed. Anyway, I am glad to see that our members are still very active in the AP. And if you have any questions or concerns, feel free to contact me.

Share the Hobby by Jim Osborn, Fox Valley Division

The Fox Valley and the North Shore and Western Divisions went one step beyond the old, "share the hobby - bring a friend" ritual. Each division hosted a joint meet during this past modeling season. By all measures, the two joint meets were very successful. The divisions saw record attendance at both sessions -- including many more than the "usual suspects" from each division. Additionally, the model contests were jam packed with outstanding entries. 13 structures were entered at the FVD meet and 18 Freight cars at the NSW session. Clearly, a little competition and home pride really gets the modeling juices going. Everyone also got the opportunity to meet some new folks who maybe they'd heard about but never personally met.

The concept came about when the NSW division lost both its regular and backup meeting quarters due to an annual conflict at their main meeting room plus some unexpected construction at the regular, secondary location. Further searches for adequate space did not yield anything suitable. On a car ride to an operating session, someone was griping about the dilemma which got people thinking. The obvious idea popped out of the air. A few, subsequent phone calls and emails sealed the arrangements for the two joint meets at each other's regular locations.

The larger, anticipated attendance -- including non-division "outside guests" -- further motivated the clinic chairmen to raise the bar with their selections. Sean Lamb, the region's Model Contest Chairman, gave us all insight into the contest judging process, plus a photo review of some excellent models showing why they were winners. Senior Editor David Popp described the behind-the-scenes activities at Model Railroader Magazine. David even extended an invitation to see his personal layout, "The Naugatuck Valley RR," after the meet. A number of us could not pass up the opportunity despite an extra hour's drive. I've seen David's N Scale layout in MR, but there is nothing like seeing it up front and personal. It is a real gem.

Both boards have since decided to make the joint sessions a permanent part of our mutual meeting schedules. There

was even talk of bringing in a third division. Distances can sometimes be a problem, but if you can get past that issue, you have an opportunity for a great Sunday afternoon talking about trains. Raise the concept at your next meet, and give it a try. It was worth the effort for us. Thanks to all who made the joint meets successful opportunities to share the hobby.

Frugal Modeler

by David Nelson

Part 1: Screening for Doors and Windows

This is the first article in a new series, The Frugal Modeler, aimed at helping conserve hobby dollars by using ordinary household items, often stuff we would otherwise toss in the trash or the recycling bin.



Completed screen installed in the windows. Realistic and easy to do.

Let's start with something simple: ordinary summer screen material for doors and windows. Some modelers use fiber or metal mesh for this, but only the most expensive mesh looks good to the naked eye, and even it is oversized, and rarely photographs convincingly. We'll use clear plastic or acetate sheets, an abrasive pad, and some India ink to make screen material that is cheaper and, I think, better looking. Plastic suited for this purpose is just tossed away every day at home or at work (packaging for household items and food, or the clear dividers in binders and reports). The clear, shiny plastic I used was a divider from a report; I have also used the wrap-around label and packaging for a computerdiscs. (I was doubly frugal and used the same shiny plastic for the glass windows). I cut out the largest unmarred all-transparent piece, and took pains to cut it as exactly square-edged as I could.

Using the abrasive pad, rub the plastic lightly in alternating and perfectly straight horizontal then vertical motions. A ridge helps guide the motions of the abrasive pad; the

inside of a box lid works. Turn the piece if that's what it takes to make all motions exactly straight. Make no circular motions; do not vary from long, straight motions in precise 90 degree angles. Be thorough, light, and even in your sanding. The goal is to have a perfect cross hatching effect on the plastic that replicates the regular pattern of genuine screening without individual lines or gouges at odd angles showing.



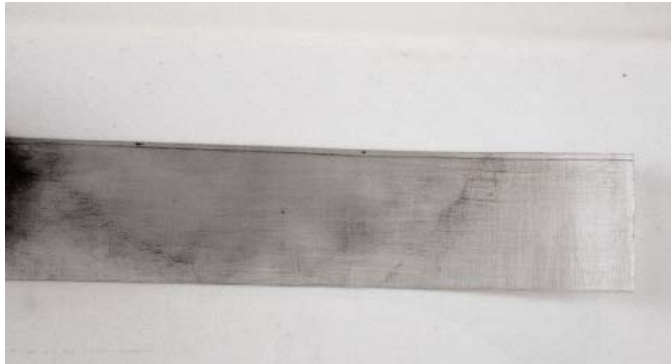
Run the abrasive pad along the sides of the box to ensure you scribe a 90 degree angle.

After blowing or brushing aside loose fragments, the plastic will look frosted but not much like screening. That is where the India ink comes in. In a spray bottle, perhaps also reclaimed from the recycling bin, combine drops of India ink into pure drugstore alcohol. Keep adding drops of the ink until the shaken mixture is as dark as tea; the exact proportions seem not to matter in my experience (various strengths of this India ink/alcohol mix, by the way, are my universal weathering/darkening agent, used on ballast, track, scenery, and trees). Spray evenly. The plastic needs to be plastic perfectly flat so the ink does not puddle. A puddle can be addressed with a cotton swab so have those handy. You may need to blow lightly on the wet ink



Spray with the India ink mixture.

mix to smooth it across the plastic. Thanks to the alcohol in the mix it dries quickly. The ink will occupy and darken each of the minute lines gouged in the plastic and the end effect replicates the darkened but still see-through appearance of genuine screening. If you had puddles you will note the darker spots they leave. If the rest of the material looks good to your eyes, either use only what looks uniform, or reapply the spray and try to even things out. Similarly if it looks too light and clear, re-spray your mix, and consider adding more ink to the mix. Remember that each individual door and window will be comparatively small so some variation in shade on the large piece as a whole is OK.



Allow to dry and you have a section of screen material to keep those pesky summer insects out.
All photos by David Nelson

Clear the Clutter!
Have fun
Improve your skills

The NMRA National Contest has an expanded menu of events.

People's Choice Awards
Modeler's Showcase
Meet the Entrants
Kit Built Contest

Visit www.nmra.org to learn more about this new celebration of models, photos, and crafts!

Artwork by Michael Tylicki, Charlton Hill Productions

Introducing the best deal in model railroading.

Join the NMRA for 6 months for just \$9.95*!

LIMITED TIME OFFER!

Sign me up!

Fill out this form, include your payment of \$9.95 (U.S. funds only) and mail it to: NMRA - Rail Pass Membership, 4121 Cromwell Road, Chattanooga, TN 37421-2119. Or sign up online at www.nmra.org.

Name _____

Address _____

City/State/Zip _____

Phone (____) _____

Email _____

Check Credit card

Credit Card # _____

Credit Card Exp _____

Signature _____

*Rail Pass offer is good in the U.S. only and is for new members and those who have not been NMRA members for two years or more. Individuals can only join at Rail Pass rates one time; membership renewal will be at the regular membership rate. Rail Pass members can vote, attend conventions and participate in contests, but cannot hold office and will not receive a New Member Pak.

- Have easy access to one of the world's largest railroad libraries...which includes over 100,000 prototype photos, 6,000 books, and over 50,000 modeling, prototype and historical society magazines
- Experience the fellowship and fun of getting modeling help and discussing the hobby with other members in your area
- Receive reduced rates on special insurance for your layout or collection
- Get admission to local model railroad meetings and events
- Receive 6 monthly issues of *Scale Rails* magazine
- Have access to standards info and data sheets
- Be a part of programs like "Modeling With The Masters," the Pike Registry, Estate Counseling, contests, clinics, the Achievement Program and more!



Visit www.nmra.org to see what you're missing!

So much bang.
So few bucks.

UPCOMING EVENTS

June 20-21
Mendota Railroad days
Union Depot Railroad Museum
703 Main Street
Mendota, IL 61342
Saturday 10:00AM - 8:30pm, Sunday 10:00AM - 3:00 PM
\$2.00 adults
\$1.00 children

June 6-7
West Bend Railfest 2009-
David Gehrke's House
501 Crocus Ct.
West Bend, WI
262-335-2875

June 18-21
Milwaukee Road Historical Association Convention
Butte Montana
www.mrha.com

June 20-21
Annual Strawberryfest Train Show
Waupaca Rec Center
Waupaca Wi
715-824-2045

June 27-28
14th Annual Galesburg Railroad Days Train Show
Carl Sandburg College
2400 Tom L. Wilson Blvd.
Galesburg, Illinois
Saturday June 27: 9 AM to 5 PM
Sunday June 28: 10 AM to 4 PM
Admission: Adults \$5.00 Children 12 and under free

July 5 - 11
NMRA National Convention, The Connecticut Convention
Center
National Train Show Friday, Saturday, and Sunday July 17-
19, 2007
www.nmra.org

July 16-19
Santa Fe Historical and Modeling Society Convention
Holiday Inn
Naperville, IL
www.atsfrr.net

July 31-August 2
Missabe RR Historical Society Convention
Duluth MN
www.missabe.com

August 4 - 8,
National Association of S Gaugers Convention
and the St. Louis Area Narrow Gaugers SLANG
St. Louis Airport Marriott
www.nasg.org

August 29-30
Model Railroad and Railroadiana Show and Sale
Presented by the Southern Illinois Train Club
Illinois Centre Mall, I-57 and Route 13, Marion, Illinois
Times:
Saturday 10 AM to 9 PM Sunday 12 AM to 5:30 PM
For more information call Randy Domineck (618) 984-4474

Reminder:

The next regularly scheduled meeting of the Board of Directors will be held Sunday, September 13, 2009 at the Fitchburg Community Center in Fitchburg Wisconsin beginning at 10:30. If you would like a copy of the meeting agenda, please contact Bert Lattan.

September 17-19
Soo Line Historical & Technical Society Convention
Alexandria, MN
www.sooline.org

September 19-20
Decatur Train Fair 2009
Saturday September 19, 2009 10 AM to 5 PM
Sunday September 20, 2009 10 AM to 4 PM
Decatur Civic Center, Decatur Illinois
Admission \$4, children 12 and under FREE with adult
For information call Steve Bricker at (217) 864-4397 or
(217) 454-2528
or email at brickers@insightbb.com

September 26
Rock Island Technical Society Convention and Swap meet
CHESTNUT MOUNTAIN RESORT
8700 W. Chestnut Mountain Rd
Galena, IL 61036
9-3 \$5.00 admission for swap meet
www.RITS.org

October 10 -11
19th annual Greater St. Louis Metro Area Train Show
Sponsored by the Mississippi Valley N Scalers
Kirkwood Community Center, Kirkwood, MO
Saturday 10 am - 5 pm, Sunday 11 am - 4 pm
Admission \$5, Children 12 and under FREE with adult

Not responsible for errors or omissions

Train Shows

With Summer fast approaching, Winter is but a distant memory. Here are some shows that I attended this winter. MadCity was held February 21-22. I elected to go Saturday, in spite of the snowstorm. (It always seems to snow that week.) Fortunately I-90 was in



Top: Bob Hainstock, president of the GB&W Historical society at his booth. That's a nice warm GBW stocking cap he was wearing.



Top: Sean Lamb showing off a new section of the Capital City N'Gineers modular layout that debuted at Artic Run. Bottom: Chip and Reid Kahrs manning the NMRA 2010 booth



PHOTO SECTION



pretty good shape until near Madison. In spite of the weather, the South Central Wisconsin Division put on a great show.



Some of the many vendors at Madison.

The following weekend was High Wheeler. We got lucky with the weather and the attendance was good. Between taking tickets at the door and manning the Soo Line Historical Society booth, I was busy.



This skirting caught my eye. It would make great curtains in the layout room.

All photos this page by David Leider

High Wheeler continued



Both photos by Rick Saviano.

I thought the highlight was this layout by the European Train Enthusiasts. The ETE was started on the West Coast and has 15 chapters. This modular layout was built by the Chicago chapter which has about 20 members. I have always been fascinated with European trains and have a small collection. The problem is that the large flanges do not lend themselves to my code 55 and 70 track.

MIDWEST REGION SPRING 2009 CONVENTION Rockford Illinois, April 17,18 and 19 2009



LAYOUT TOURS



Top Left: Mike McBrides Bridge. My favorite scene. Looks real doesn't it?

Top Right and Bottom Right: Don Lewis' vertical staging. Also known as Cassettes.

Bottom Left: Mike Schaefer's Peoria yard. Photos David Leider

First Place Contest Winners



Best of Show-Novice
Don Erlandson- two truck Shay and ore cars



Aubrey Olson discussing how he makes the items he sells under the Caboose Industries name.



Moskal Award for CNW equipment
Don Lewis



Non Revenue
Don Lewis- U.S. Army Kitchen Car



Best of Show Master
James Wise- Logging and Tractor Repair Shed
This also received first place for **Off-Line Structure**



On Line Structure
John Mann- Mendota IC/CB&Q Tower



Traction
 Donald Lewis- LSE #23



Passenger Cars
 Michael Pollare- Union Pacific Theater car



Caboose
 Don Lewis- Illinois Central caboose #9289



Display on Line
 John Swanson- Grain facility
 This also received the **President's Award**



Freight Cars
 Don Lewis- GARR Box Car 1952



Two judges deliberating over one of the models prior to judging. A critical eye is required.

All photos pages 10 and 11 courtesy of John Whinnery

“We Satisfy Your Addiction”

We cater to Model Railroaders by specializing in DCC, N, HO and G Gauge. We are Factory Trained Dealers for Digitrax and Soundtraxx products. Authorized Dealer for Digitrax, NCE, TCS, Soundtraxx, Lok Sound, QSI, and Airwire 900 products with installation available since 1996. We also offer award winning custom painting, model building and layout construction services. Clinics on varied topics are typically offered every Tuesday evening and Saturday afternoons.

EngineHouse Services, LLC

2737 N. Packerland Dr., 2H - Green Bay, WI 54303
920-490-4839

www.enginehouseservices.com

Email: sales@enginehouseservices.com

10-6 Monday-Thursday

10-7 Fridays

9:30-4 Saturdays

Closed Sundays (we play with trains too!)

Proud Supporter of the World's Greatest Hobby!

South Central WI Division
3015 Union St. # 4
Madison WI 53714

Return Service Requested

Non-Profit
Organization
US Postage Paid
Permit No. 1543
Madison, WI 53714